

PLUGGED IN

FUN FOR KIDS

A COOPERATIVE PROJECT OF THE SANTA BARBARA NEWS-PRESS AND THE EDUCATORS' ROUNDTABLE, PUBLISHED MONTHLY TO PROMOTE LEARNING AMONG YOUNG READERS IN NATURAL SCIENCE, HISTORY, TECHNOLOGY AND ART

GET **connected** connected

GET CONNECTED WITH THE MEMBERS OF THE EDUCATORS' ROUNDTABLE:

 Channel Islands National Marine Sanctuary
805-966-7107; www.channelislands.noaa.gov

 Santa Barbara Mission Museum
805-682-4149

 Santa Barbara Trust for Historic Preservation
805-965-0093; www.sbthp.org

 Ganna Walska Lotusland
805-969-3767; www.lotusland.org


 Santa Barbara Botanic Garden
805-682-4726; www.sbbg.org

 Channel Islands National Park
805-658-5730; www.nps.gov/chis


 Santa Barbara Maritime Museum
805-962-8404; www.sbm.org

 Santa Barbara Museum of Art
805-963-4364; www.sbma.net

 Santa Barbara Historical Society
805-966-1601

 Goleta Valley Historical Society
805-964-4407; www.goletahistory.org

 South Coast Watershed Resource Center
805-682-6113
www.WatershedResourceCenter.org

 Santa Barbara Public Library System
805-962-7653; www.sbplibrary.org

 Karpeles Manuscript Library Museum
805-962-5322; www.karpeles.com

 Carriage and Western Art Museum of Santa Barbara
805-962-2353; www.carriagemuseum.org

 Cachuma Lake Nature Center, Inc.
805-693-0691

 University Art Museum, UCSB
805-893-2951
www.uam.ucsb.edu

 Santa Barbara Museum of Natural History
www.sbnature.org; 805-682-4711

 Santa Barbara Zoological Gardens
805-962-5339
www.santabarbarazoo.org

 Santa Barbara County Parks
805-568-2461
www.sbparks.com

 Santa Barbara Contemporary Arts Forum
805-966-5373; www.sbcaf.org

 Art From Scrap
805-884-0459
www.artfromscrap.org

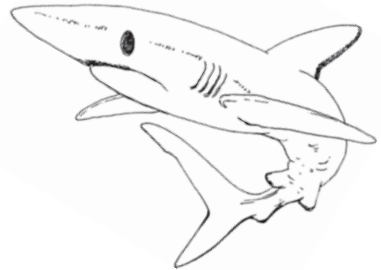
 USDA Forest Service, Los Padres National Forest
805-968-6640
www.fs.fed.us/r5/lospadres

 South Coast Railroad Museum
805-964-3540; www.goletadepot.org

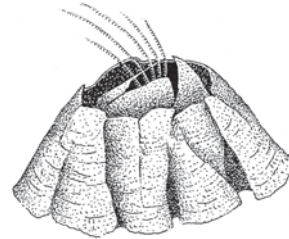
This Month's Theme: WHAT'S UNDER STEARNS WHARF?

The Santa Barbara Museum of Natural History Ty Warner Sea Center offers a unique window to the ocean world. Plankton (small plants and animals that drift freely in the water) under Stearns Wharf are difficult to see without a microscope,

while fish are regularly observed eating animals that make their homes on wharf pilings. Large marine mammals such as dolphins and sea lions are observed offshore daily, especially in the afternoons, when they feed on schooling fish.



1. khsar



2. larcnbae



3. aes tsar



4. nplkatno



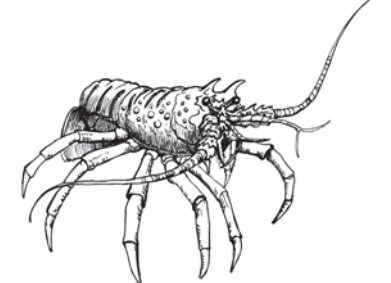
5. pelk brca



6. slsmue

Unscramble the letters to identify the animals living under Stearns Wharf. The answers are below.

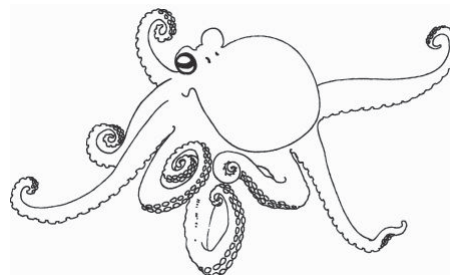
Circle and color the animals you have personally observed or touched.



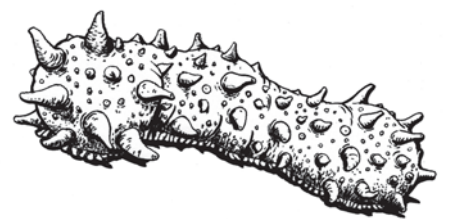
7. lbrsote



8. opeodcp



9. oospctu



10. eas uccumebr

Marine scientists explore the ocean using special tools. Four ocean tools are pictured below. Guess which tools are used specifically for the

following activities: Collecting water, measuring water clarity, sampling the ocean bottom, and collecting plankton.



For information on the Sea Center's volunteer Sea Crew, call 805-962-2526 Extension 104.

FREE ADMISSION: Complete this page and bring it with you to receive one free child visit at the Ty Warner Sea Center.

Answer Key: 1. shark, 2. barnacle, 3. sea star, 4. plankton, 5. kelp crab, 6. mussel, 7. lobster, 8. copepod, 9. octopus, 10. sea cucumber

 Wildling Art Museum
805-688-1082
www.wildlingmuseum.org

 Ty Warner Sea Center
805-962-2526
www.sbnature2.org

 The Outdoor School at Rancho Alegre
805-686-5167
www.theoutdoorschool.org

 The Center for Urban Agriculture at Fairview Gardens
805-967-7369
www.fairviewgardens.org

"Plugged In" is sponsored by: 
Montecito Bank & Trust
Member FDIC